

Name:

Time: 30 minutes.

Answer all the questions

1. Fill in the blanks “a” and “b” related to the decision in the following flow chart. Those who are 18 year or above are “eligible to vote” and those who are below 18 years are not “eligible to vote”.

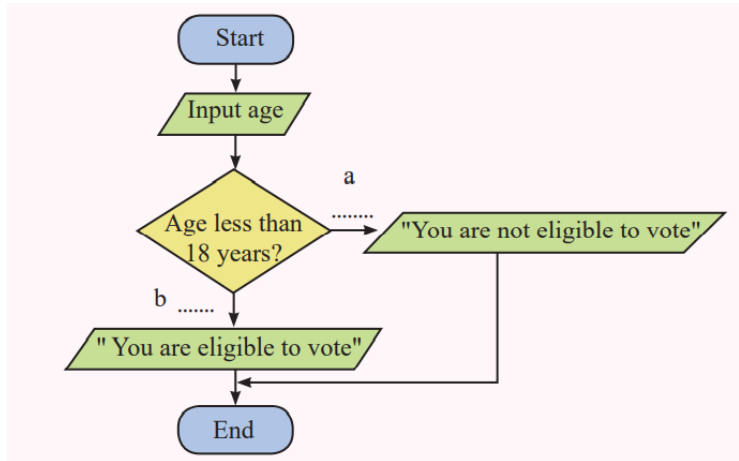
a -

b -

2. What are the three types of control structures?

.....
.....
.....

3. Write what each of these symbols are used for in a flowchart.



4. Complete the following flow chart of finding area of a rectangle

